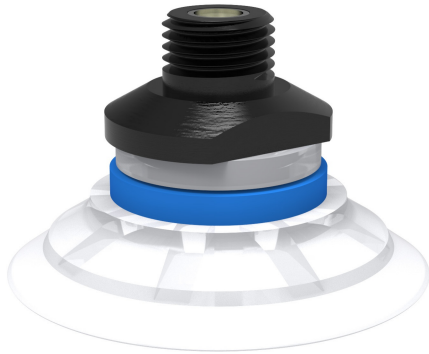


Datasheet

Suction cup F50-2 Silicone FCM, 1/4" NPT male, with mesh filter

Item number: F50-2.21.05AC



- The silicone material complies with FDA 21 CFR 177.2600 & EU 1935/2004.
- Suitable for flat objects.
- Good stability and little inherent movement.
- Recommended when the lifting force is parallel to the surface of the object.
- Cleats prevent thin, sensitive objects from being deformed and give extra friction when the lifting force is parallel.

Technical data

| Description | Unit | Value |
|---------------------------------|-----------------|--|
| Suction cup shape | - | Flat |
| Suction cup design | - | Round |
| Characteristics (for filtering) | - | Food contact materials (FDA & EU). non-detectable. High/low temp cup (plastic) |
| Material | - | Silicone (SIL) |
| Weight, min. | oz | 0.49 |
| Suction cup model | - | F |
| Volume | in ³ | 0.61 |
| Height | in | 1.28 |
| Outer diameter, min. | in | 2.087 |
| Fitting size | - | 1/4" |
| Fitting option | - | Filter mesh |
| Fitting style | - | Male |
| Fitting type | - | NPT-thread |
| Fitting material | - | Al |
| Suction cup model | - | F50-2 |
| Movement, vertical max. | in | 0.087 |
| Curve radius, min. | in | 2.17 |

Performance - Lifting forces

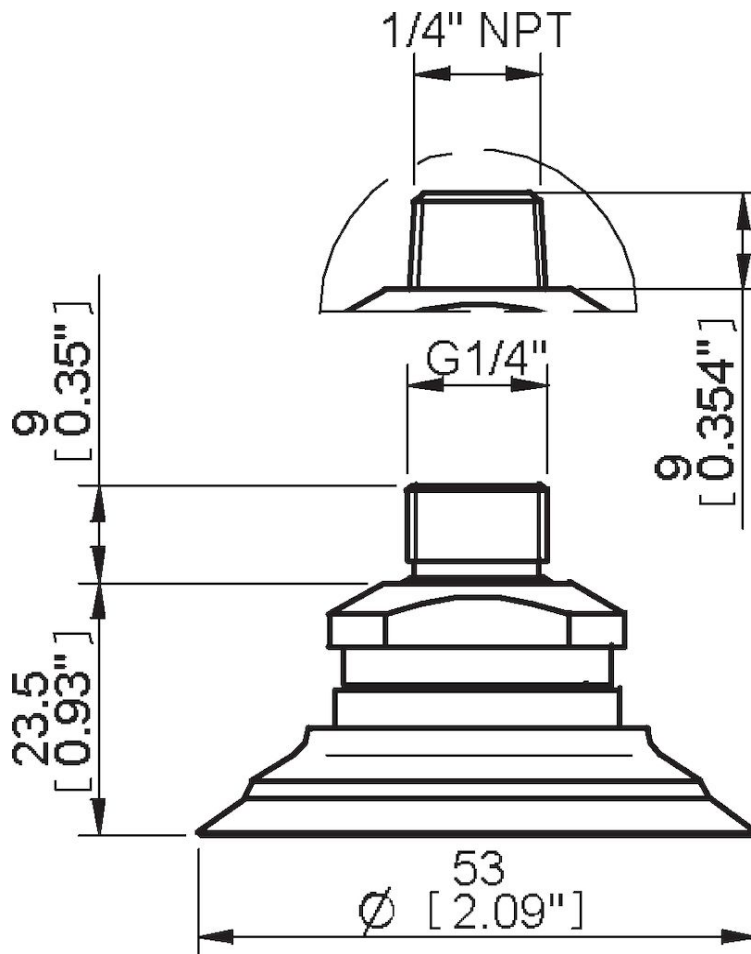
| F50-2 | Vertical (lb) | Parallel (lb) |
|-------------|---------------|---------------|
| 5.91 -inHg | 8.093 | 5.4 |
| 17.72 -inHg | 16.64 | 8.99 |
| 26.58 -inHg | 21.58 | 11.24 |

| Material | |
|------------------------|------------------------------|
| Name | Silicone (SIL FDA) 50° Shore |
| Color | Transparent |
| Temperature, min. °F | -40 |
| Temperature max. °F | 392 |
| Hardness °Shore A | 50 |

Material resistance

| | |
|--------------------|----------------|
| Alcohol | Good |
| Concentrated acids | Poor |
| Ethanol | Not applicable |
| Hydrolysis | Fair |
| Methanol | Not applicable |
| Oil | Poor |
| Oxidation | Excellent |
| Gasoline | Poor |
| Wear resistance | Good |
| Weather and ozone | Excellent |

Dimensional drawings



Values specified in this data sheet are tested at (unless otherwise stated):

- Room temperature (20°C [68°F] ± 3°C [5.5°F]).
- Standard atmosphere (101.3 [29.9 inHg] ± 1.0 kPa [0.3 inHg]).
- Relative humidity 20-70%.
- Compressed air quality, DIN ISO 8573-1 class 4.

Accessories

- 05AG | Fitting 1/8" NPSF female, 50, with mesh filter
- 05AB | Fitting G1/4" male, 50, with mesh filter

Spare parts

- F50-2.21 | Suction cup F50-2 Silicone FCM
- 05AC | Fitting 1/4" NPT male, with mesh filter