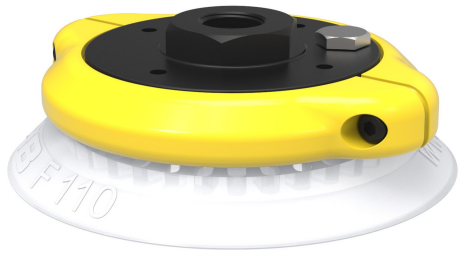


Datasheet

Suction cup F110 Silicone FCM, 3/8" NPSF female, with mesh filter

Item number: F110.21.11NB



- The silicone material complies with FDA 21 CFR 177.2600 & EU 1935/2004.
- Suitable for flat objects.
- Good stability and little inherent movement.
- Recommended when the lifting force is parallel to the surface of the object.
- Cleats prevent thin, sensitive objects from being deformed and give extra friction when the lifting force is parallel.

Technical data

Description	Unit	Value
Suction cup shape	-	Flat
Suction cup design	-	Round
Characteristics (for filtering)	-	Food contact materials (FDA & EU). non-detectable. High/low temp cup (plastic)
Material	-	Silicone (SIL)
Weight, min.	oz	2.33
Suction cup model	-	F
Volume	in ³	4.27
Height	in	1.43
Outer diameter, min.	in	4.41
Fitting size	-	3/8"
Fitting option	-	Filter mesh
Fitting style	-	Female
Fitting type	-	NPSF-thread
Fitting material	-	Al
Suction cup model	-	F110
Movement, vertical max.	in	0.16
Curve radius, min.	in	9.84

Performance - Lifting forces

F110	Vertical (lb)	Parallel (lb)
5.91 -inHg	31.47	31.47
17.72 -inHg	94.42	56.2
26.58 -inHg	125.89	67.44

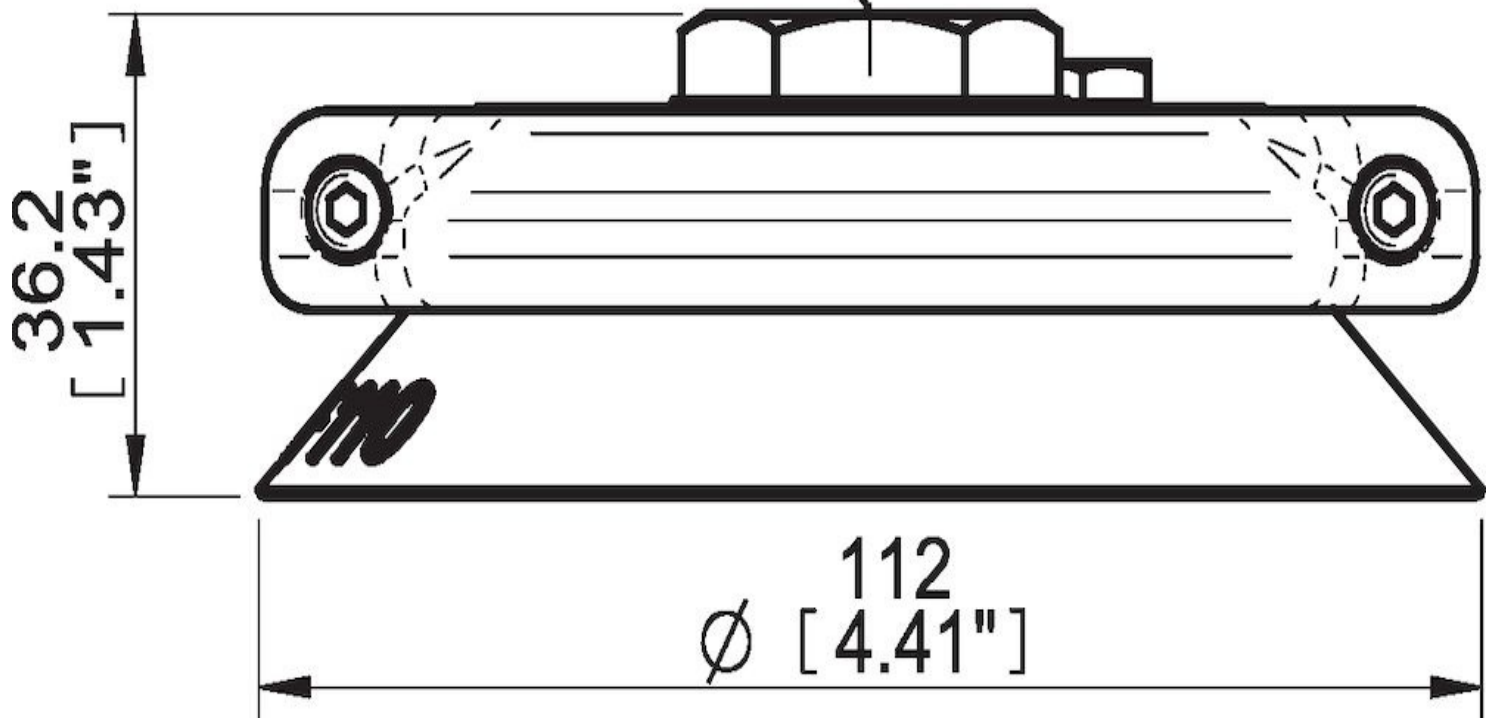
Material	
Name	Silicone (SIL FDA) 50° Shore
Color	Transparent
Temperature, min. °F	-40
Temperature max. °F	392
Hardness °Shore A	50

Material resistance

Alcohol	Good
Concentrated acids	Poor
Ethanol	Not applicable
Hydrolysis	Fair
Methanol	Not applicable
Oil	Poor
Oxidation	Excellent
Gasoline	Poor
Wear resistance	Good
Weather and ozone	Excellent

Dimensional drawings

G3/8", G1/2"
3/8" NPSF



Values specified in this data sheet are tested at (unless otherwise stated):

- Room temperature (20°C [68°F] ± 3°C [5.5°F]).
- Standard atmosphere (101.3 [29.9 inHg] ± 1.0 kPa [0.3 inHg]).
- Relative humidity 20-70%.
- Compressed air quality, DIN ISO 8573-1 class 4.

Accessories

11NC | Fitting 110, G1/2" female, clamp ring with mesh filter

Spare parts

- 11NB | Fitting 110, 3/8" NPSF female, with mesh filter
- F110.21 | Suction cup F110 Silicone FCM