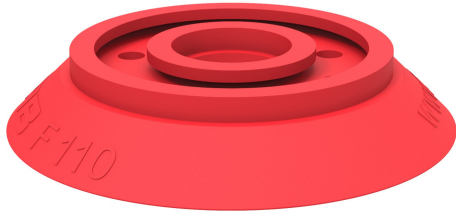


Suction cup F110 Silicone with washer

Item number: F110.20.W

- FDA/EU compliant silicone for regulated industries
- Flat design for secure, stable handling
- Resistant to chemicals and high temperatures
- Hygienic and easy to clean
- Ideal for food, pharma, and sensitive applications
- Recommended when the lifting force is parallel to the surface of the object.



Technical data

Description	Unit	Value
Suction cup shape	-	Flat
Suction cup design	-	Round
Characteristics (for filtering)	-	High/low temp cup (plastic)
Material	-	Silicone (SIL)
Weight, min.	oz	2.33
Suction cup model	-	F
Volume	in ³	4.27
Height	in	0.79
Outer diameter, min.	in	4.41
Fitting size	-	None
Fitting option	-	Washer
Fitting style	-	None
Fitting type	-	None
Fitting material	-	None
Suction cup model	-	F110
Movement, vertical max.	in	0.16
Curve radius, min.	in	9.84

Performance - Lifting forces

F110	Vertical (lb)	Parallel (lb)
5.91 -inHg	31.47	31.47
17.72 -inHg	94.42	56.2
26.58 -inHg	125.89	67.44

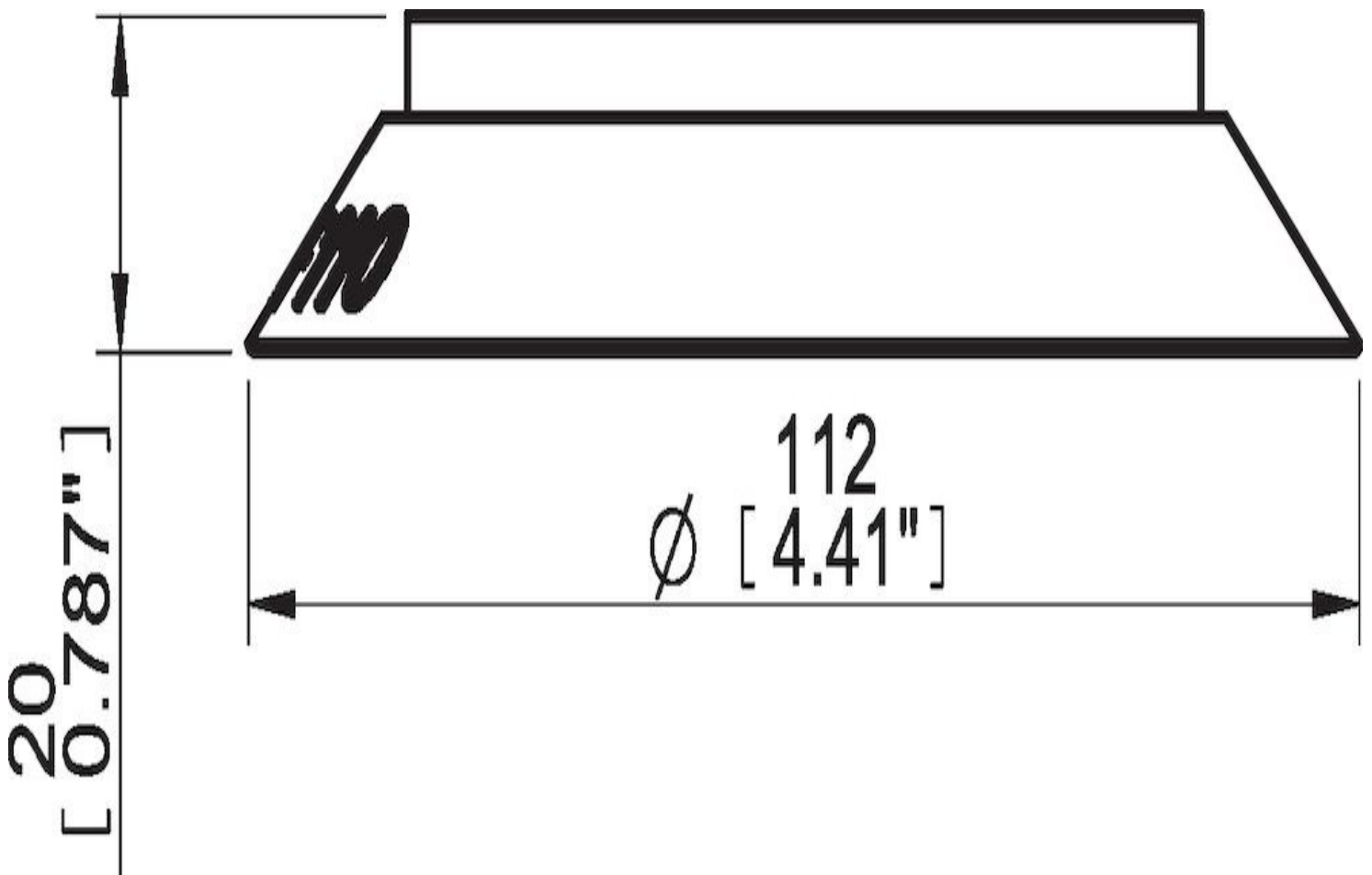
Material

Name	Silicone. SIL 50° Shore A
Color	Red
Temperature, min. °F	-40
Temperature max. °F	392
Hardness °Shore A	50

Material resistance

Alcohol	Good
Concentrated acids	Poor
Ethanol	Not applicable
Hydrolysis	Fair
Methanol	Not applicable
Oil	Poor
Oxidation	Excellent
Gasoline	Poor
Wear resistance	Good
Weather and ozone	Excellent

Dimensional drawings



Values specified in this data sheet are tested at (unless otherwise stated):

- Room temperature (20°C [68°F] ± 3°C [5.5°F]).
- Standard atmosphere (101.3 [29.9 inHg] ± 1.0 kPa [0.3 inHg]).
- Relative humidity 20-70%.
- Compressed air quality, DIN ISO 8573-1 class 4.

Accessories

- 11NA | Fitting 110 G3/8" female, clamp ring with mesh filter
- 11NB | Fitting 110, 3/8" NPSF female, with mesh filter
- 11NC | Fitting 110, G1/2" female, clamp ring with mesh filter
- 11VC | Fitting 110, G1/2" female, with cone valve
- 11UA | Fitting G1/2" female AI, with mesh filter