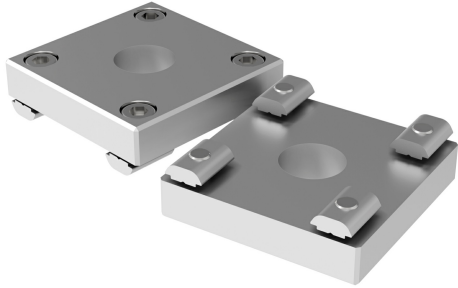


Kit Flange FL-FX for KVG60

Item number: 02.10.847



- Mounting flanges adapted to KVG60, KVG120, and KVG150.
- G1/2" interface.
- The mounting screws and T nuts are included.
- Recommended with KSPH G1/2" male level compensators.

Technical data

Description	Unit	Value
Material	-	Al
Weight, min.	oz	4.94

Dimensional drawings

