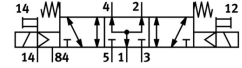


Air solenoid valve CDVI5.0-MT2H-5/3BS

Part number: 196655

FESTO



[General operating condition](#)

Data sheet

| Feature | Value |
|--|--|
| Valve function | 5/3, pressurized |
| Actuation type | Electrical |
| Standard nominal flow rate | 650 l/min |
| Pneumatic working port | Sub-base |
| Operating voltage | 24V DC |
| Operating pressure | -0.9 bar ... 10 bar |
| Structural design | Piston gate valve |
| Reset method | Mechanical spring |
| Nominal width | 5 mm |
| Exhaust air function | With flow control option |
| Sealing principle | Soft |
| Manual override | Non-detenting |
| Type of control | Pilot-controlled |
| Pilot air supply port | External |
| Flow direction | Reversible |
| Symbol | 00991128 |
| Note on forced dynamization | Switching frequency at least once a month |
| Pilot pressure | 3 bar ... 8 bar |
| b-value | 0.37 |
| C value | 3.2 l/sbar |
| Switching time off | 25 ms |
| On switching time | 12 ms |
| Changeover time | 17 ms |
| Operating medium | Compressed air as per ISO 8573-1:2010 [7:4:4] |
| Information on operating and pilot media | Operation with oil lubrication possible (required for further use) |
| Corrosion resistance class (CRC) | 3 - High corrosion stress |
| LABS (PWIS) conformity | VDMA24364-B2-L |
| Temperature of medium | -5 °C ... 50 °C |
| Ambient temperature | -5 °C ... 50 °C |
| Product weight | 210 g |
| Type of mounting | Screw-in |
| Pilot exhaust air port 82/84 | Sub-base |
| Pneumatic connection 1 | Sub-base |
| Pneumatic connection 2 | Sub-base |
| Pneumatic connection 3 | Sub-base |
| Pneumatic connection 4 | Sub-base |

| Feature | Value |
|------------------------|-------------------|
| Pneumatic connection 5 | Sub-base |
| Note on materials | RoHS-compliant |
| Seals material | NBR TPE-O |
| Housing material | Die-cast aluminum |